

WitaTrap® Funnel Trap Pro



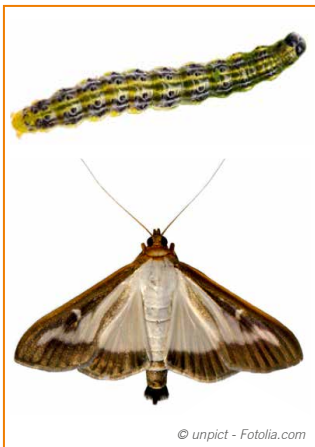
Trap especially suited for mass trapping butterflies and beetles

- Trap with cross vanes and transparent capture container for mass trapping suited for moths and beetles
- Install pheromone underneath trap cover (Lid) in holding unit (Cage and Cap).
- Insects (for example moths or beetles) attracted by the pheromone fall into capture container and cannot fly out (live trap).
- Especially suited for insects like: box tree moth, gipsy moth, nun moth, oak processionary moth, goat moth, leopard moth, winter moth, cockchafer, old house borer, etc. **(suitable pheromones available from Witasek)**
- The transparent collecting container allows easy visual inspection of the catch without having to open the trap.

Instructions for Assembling:

- Put dispenser in cage and place it under the lid.
- Close with cap from above.
- The trap should be checked regularly (at least two times per week)
- We recommend replacing the attractant (pheromone dispenser) in good time, depending on the duration of its effect, in order to achieve optimal catching results.
- Tipp: you can add a little salty solution (2-4 cm) to the capture container to prevent insects from escaping.

(See back for more information on assembly)



© unpict - Fotolia.com

box tree moth
(*Cydalima perspectalis*)

item no.	item
313913	WitaTrap® Funnel Trap Pro
	Sales unit: from 1 piece

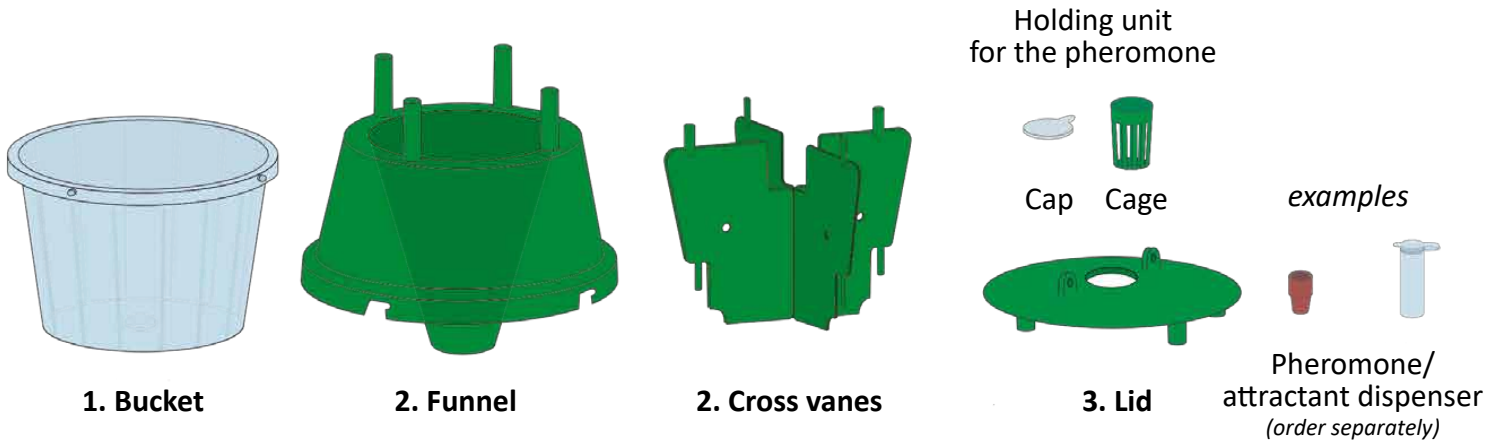


Matching pheromones available at Witasek! – www.witasek.com

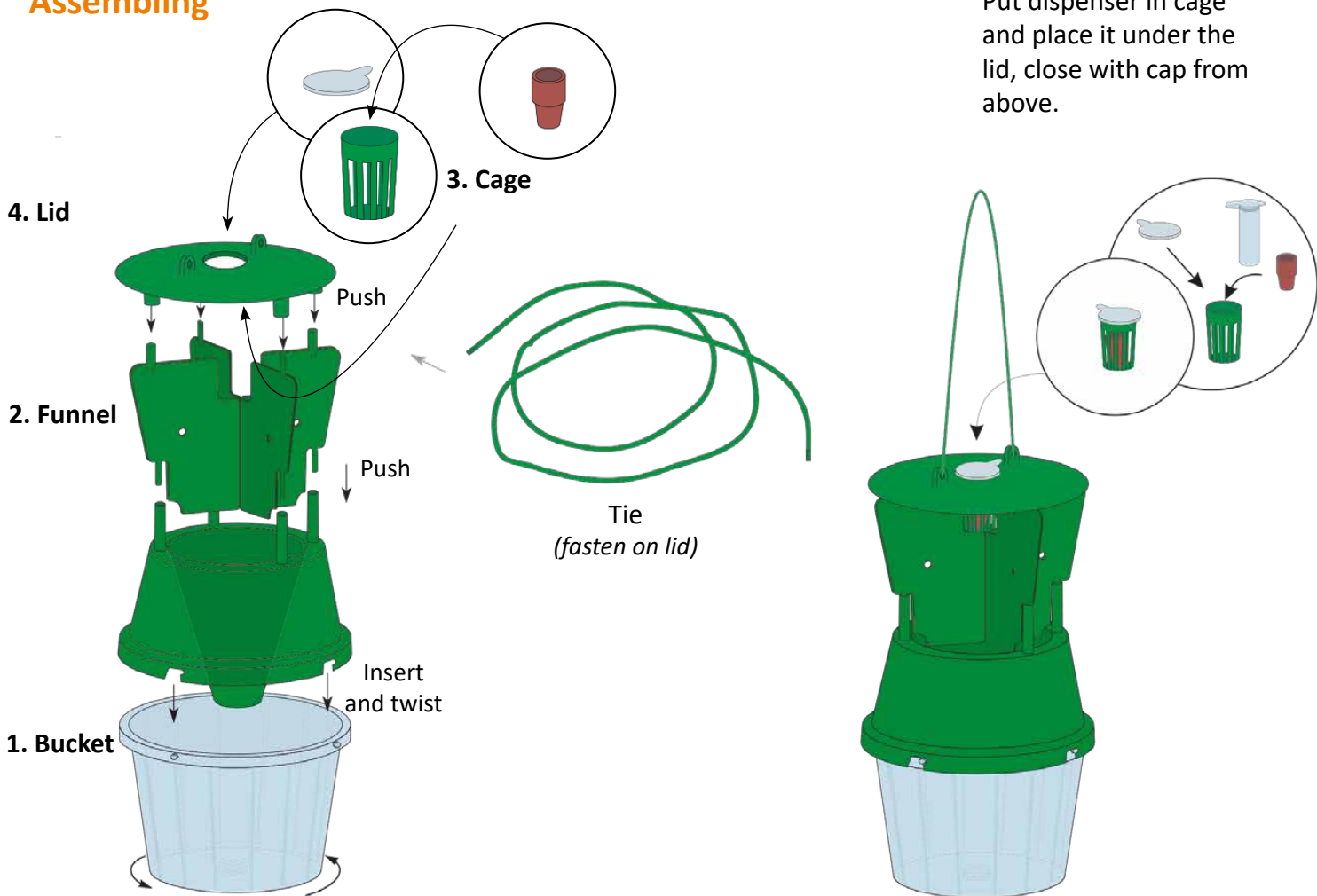


Assembly instructions – WitaTrap® Funnel Trap Pro

Components



Assembling



*Tipp for wet trapping method: You can fill some water (2–4 cm) with salt into the bucket to prevent insects from escaping.